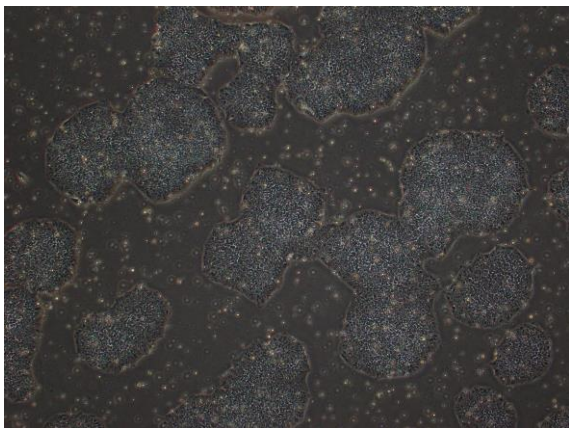
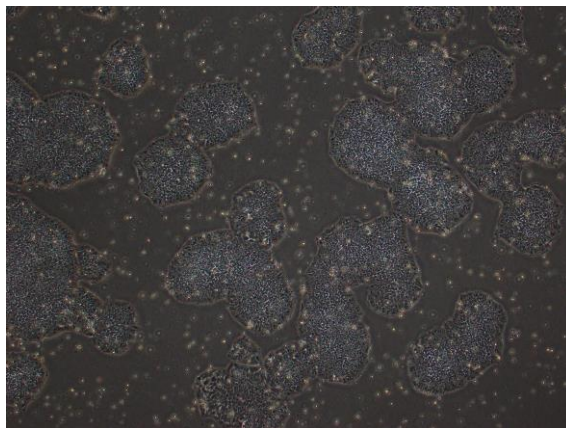


## 【 CiRA-j-1568 】 Morphology of iPSC colonies

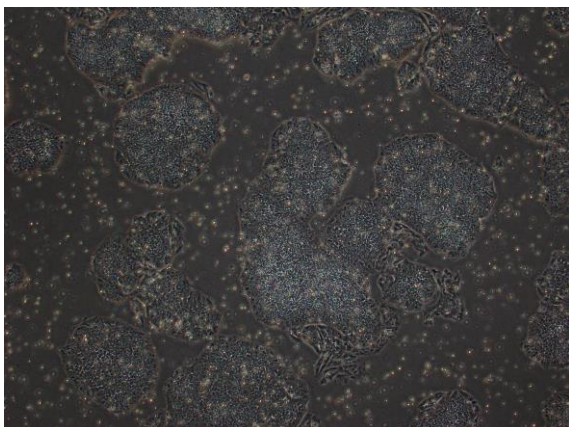
CiRA-j-1568-A: passage-3



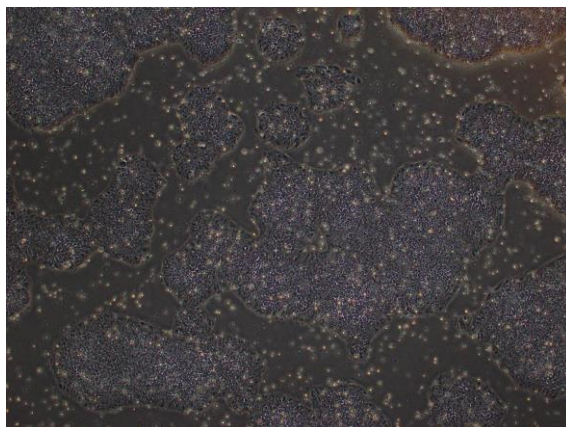
CiRA-j-1568-B: passage-5



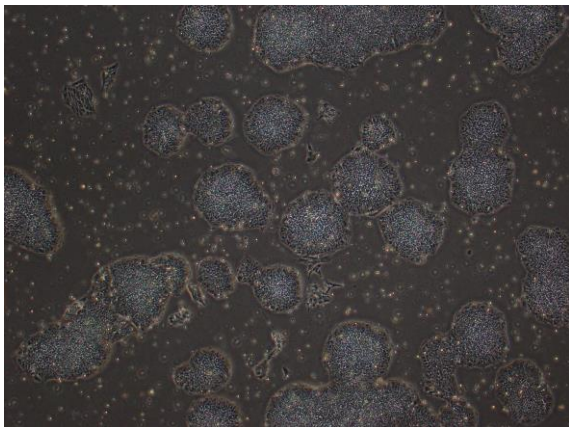
CiRA-j-1568-C: passage-3



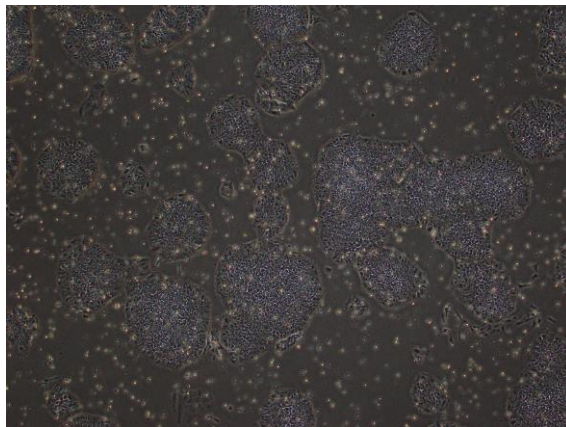
CiRA-j-1568-D: passage-3



CiRA-j-1568-E: passage-4



CiRA-j-1568-F: passage-3



( All images were captured at 4x magnification )